

Student Work Sample #1

Name: _____

Date: _____

Teacher's Instructions:

Illustrate a professional in their workplace and describe some characteristics about their career.

Student #1 Illustration:



Student #1 Written Work:

- Construction managers plan and oversee building projects.
- They spend most of their time in an office creating schedules and budgets.
- This job is part of the health career group.
- They use Language Arts skills to read reports on factory costs and production.

Student Work Sample #2

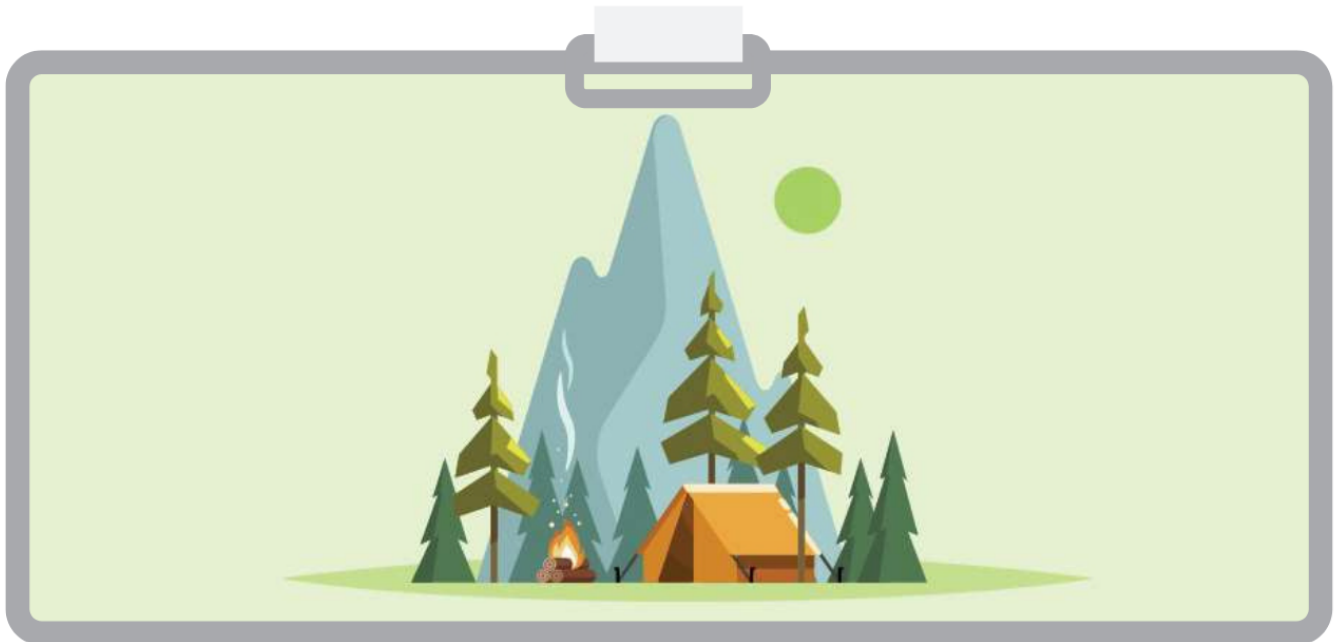
Name: _____

Date: _____

Teacher's Instructions:

Illustrate a professional in their workplace and describe some characteristics about their career.

Student #2 Illustration:



Student #2 Written Work:

Environmental Techs work hard to keep pollution out of the air, water, and soil. Without them we would not be able to enjoy camping in the wilderness. We can help environmental techs by making sure harmful waste, like batteries, are thrown away properly. To become an environmental tech you must like science and math because you need to understand how pollution affects our planet and use measurement skills when doing lab experiments. This career is part of the nature career path because environmental techs focus on taking care of the earth.

Effort Rubric

Student Sample # _____

Criteria	Level 1	Level 2	Level 3	Level 4
Illustration quality <ul style="list-style-type: none"> Color scheme Detailed shapes and lines 	Chosen shapes, lines, and color scheme express the scene with little effectiveness.	Chosen shapes, lines, and color scheme express the scene with some effectiveness.	Chosen shapes, lines, and color scheme express the scene with considerable effectiveness.	Chosen shapes, lines, and color scheme express the scene with a high degree of effectiveness.
Illustration content <ul style="list-style-type: none"> Includes a professional at their workplace 	Illustration of the workplace is inappropriate for that career and/or does not include the professional.	Illustration includes a few details about the workplace environment, such as tools or equipment they might use. The professional is inappropriately dressed for their career.	Illustration includes some details about the workplace environment, such as tools and equipment they might use. The professional is adequately dressed for their career.	Illustration includes many details about the workplace environment, such as tools and equipment they might use. The professional is appropriately dressed for their career.
Writing quality <ul style="list-style-type: none"> Paragraph structure Complete sentences Punctuation 	Written description does not use paragraph structure, and sentences are often incomplete and punctuation is not used.	Written description does not use paragraph structure, but includes complete sentences, and appropriate punctuation.	Written description uses appropriate paragraph structure, including complete sentences, and punctuation most of the time.	Written description uses appropriate paragraph structure, including complete sentences, and punctuation throughout.
Writing content <ul style="list-style-type: none"> At least 4 accurate career characteristics 	Written description includes 1 accurate characteristic about the career.	Written description includes 2 accurate characteristics about the career.	Written description includes 3 accurate characteristics about the career.	Written description includes 4 or more accurate characteristics about the career.

Name: _____