

You're the Teacher!



Concept
Learning Skills



Length
15-20 Minutes

Inquiry Prompts

- Why should someone put their best effort forth at school?
- What does it look like when someone makes an effort?
- What are the benefits of trying your best?
- Does effort always equal success (e.g. high marks)?

Instructions

In this activity, students use an effort rubric to “grade” some sample work. The objective is to ensure students can identify various levels of effort and interpret rubrics to gauge how they can try their hardest with their own work.

- 1 Hand out the [effort rubric](#) and [sample assignments](#) to groups of students. Students will need 2 rubric sheets so they can score both assignments.
- 2 Ask them to study the rubric. Use it as a guide for evaluating the amount of effort involved in the sample works. They can circle or color in the box with the score they want to give the work in each of the categories.
- 3 Encourage students to discuss the evidence they’ve found for their rating.
- 4 Ask groups to explain why they graded the work the way they did. Discuss why groups agreed or disagreed about the results.

Message for students: Sometimes trying your best means a higher mark or a big reward. But sometimes the rewards aren’t as obvious. In some cases, trying your best means you’ve challenged yourself, learned a lot, and prepared yourself to meet more—and maybe even bigger—challenges next time.

Materials Required

- [Two sample student assignments](#)
- [Effort rubrics](#)
- Pencils, colored pencils, or markers
- Computers (tablets, phones) with Internet access (if you want students to upload artifacts)

Artifacts

Upload students’ effort self-assessment to Storyboard. They can also use their answers as a basis for setting a goal about trying their best at a task in the My Goals section of Xello.

Student Work Sample #1

Name: _____

Date: _____

Teacher's Instructions:

Illustrate a professional in their workplace and describe some characteristics about their career.

Student #1 Illustration:



Student #1 Written Work:

- Construction managers plan and oversee building projects.
- They spend most of their time in an office creating schedules and budgets.
- This job is part of the health career group.
- They use Language Arts skills to read reports on factory costs and production.

Student Work Sample #2

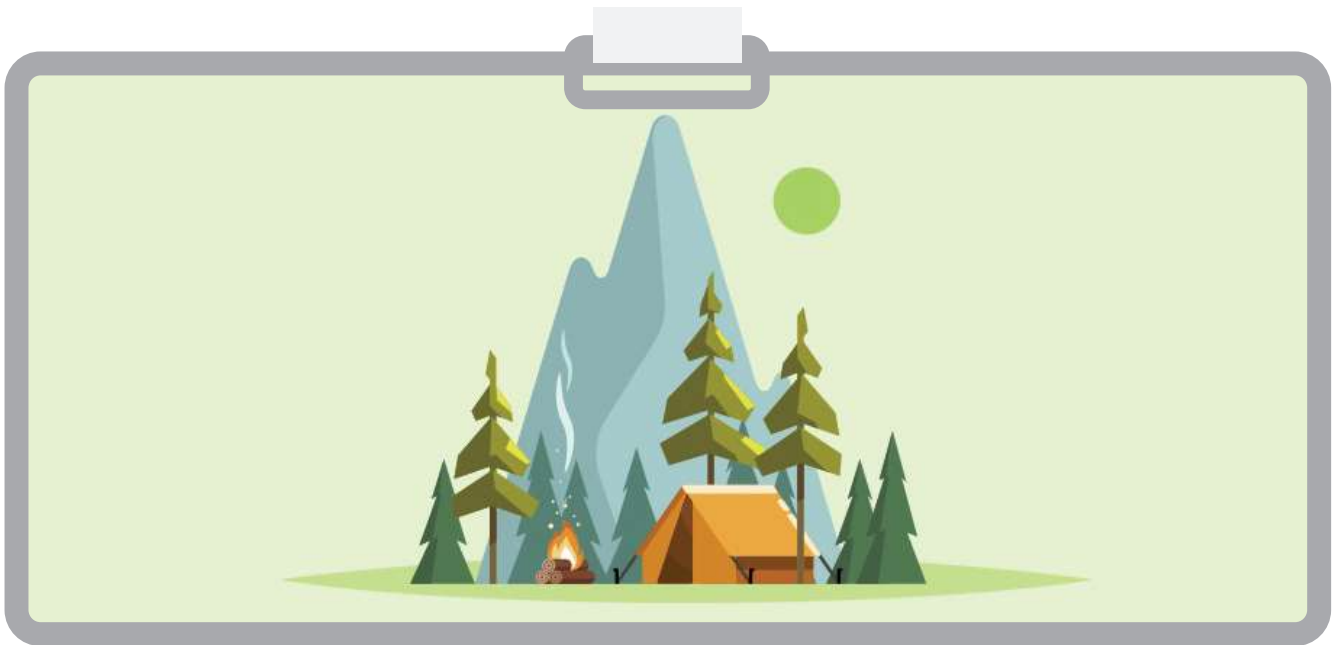
Name: _____

Date: _____

Teacher's Instructions:

Illustrate a professional in their workplace and describe some characteristics about their career.

Student #2 Illustration:



Student #2 Written Work:

Environmental Techs work hard to keep pollution out of the air, water, and soil. Without them we would not be able to enjoy camping in the wilderness. We can help environmental techs by making sure harmful waste, like batteries, are thrown away properly. To become an environmental tech you must like science and math because you need to understand how pollution affects our planet and use measurement skills when doing lab experiments. This career is part of the nature career path because environmental techs focus on taking care of the earth.

Effort Rubric

Student Sample # _____

Criteria	Level 1	Level 2	Level 3	Level 4
Illustration quality <ul style="list-style-type: none"> Color scheme Detailed shapes and lines 	Chosen shapes, lines, and color scheme express the scene with little effectiveness.	Chosen shapes, lines, and color scheme express the scene with some effectiveness.	Chosen shapes, lines, and color scheme express the scene with considerable effectiveness.	Chosen shapes, lines, and color scheme express the scene with a high degree of effectiveness.
Illustration content <ul style="list-style-type: none"> Includes a professional at their workplace 	Illustration of the workplace is inappropriate for that career and/or does not include the professional.	Illustration includes a few details about the workplace environment, such as tools or equipment they might use. The professional is inappropriately dressed for their career.	Illustration includes some details about the workplace environment, such as tools and equipment they might use. The professional is adequately dressed for their career.	Illustration includes many details about the workplace environment, such as tools and equipment they might use. The professional is appropriately dressed for their career.
Writing quality <ul style="list-style-type: none"> Paragraph structure Complete sentences Punctuation 	Written description does not use paragraph structure, and sentences are often incomplete and punctuation is not used.	Written description does not use paragraph structure, but includes complete sentences, and appropriate punctuation.	Written description uses appropriate paragraph structure, including complete sentences, and punctuation most of the time.	Written description uses appropriate paragraph structure, including complete sentences, and punctuation throughout.
Writing content <ul style="list-style-type: none"> At least 4 accurate career characteristics 	Written description includes 1 accurate characteristic about the career.	Written description includes 2 accurate characteristics about the career.	Written description includes 3 accurate characteristics about the career.	Written description includes 4 or more accurate characteristics about the career.

Name: _____